

**This camera manual library is for reference and historical purposes, all rights reserved.**

**This page is copyright by mike@butkus.org M. Butkus, N.J.**

**This page may not be sold or distributed without the expressed  
permission of the producer**

**I have no connection with any camera company**

**If you find this manual useful, how about a donation of \$3 to: M. Butkus, 29 Lake Ave., High Bridge, NJ 08829-1701 and send your E-mail address too so I can thank you. Most other places would charge you \$7.50 for a electronic copy or \$18.00 for a hard to read Xerox copy. These donations allow me to continue to buy new manuals and maintain these pages. It'll make you feel better, won't it?**

**If you use Pay Pal, use the link below. Use the above address for a check, M.O. or cash. Use the E-mail of butkusmi@ptd.net for PayPal.**



**[back to my "Orphancameras" manuals /flash and light meter site](#)**

**Only one "donation" needed per manual, not per multiple section of a manual !**

**The large manuals are split only for easy download size.**

www.orphancameras.com

**Canon**

**NEW**  
**SURE SHOT**

**PRIMA**  
**Twin**

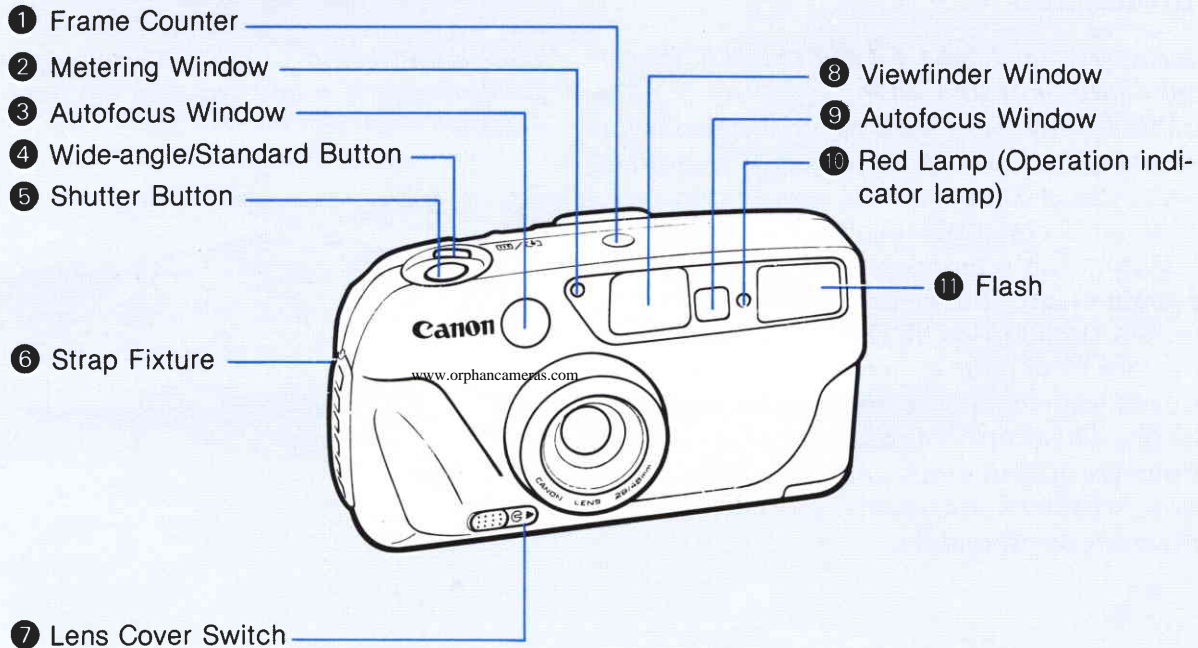


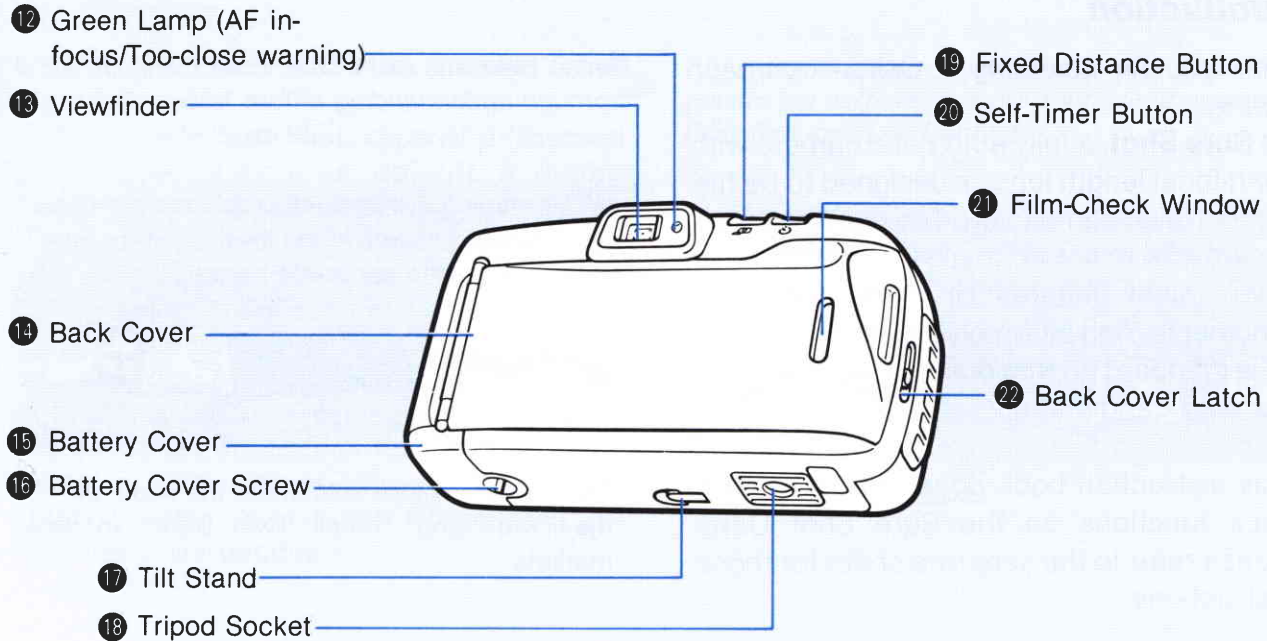
**E**  
INSTRUCTIONS

**F**  
MODE D'EMPLOI

**S**  
INSTRUCCIONES

# NOMENCLATURE





## ***NOMENCLATURE***

- |   |                                 |   |   |
|---|---------------------------------|---|---|
| ① | Compteur de vues                | ⑫ | Témoin vert (mise au point AF/avertissement de trop près) |
| ② | Fenêtre du posemètre            | ⑬ | Viseur  |
| ③ | Fenêtre autofocus               | ⑭ | Dos   |
| ④ | Sélecteur grand-angle/standard  | ⑮ | Couvercle de pile   |
| ⑤ | Déclencheur                     | ⑯ | Vis du couvercle de pile                                  |
| ⑥ | Attache de courroie             | ⑰ | Dispositif d'inclinaison                                  |
| ⑦ | Commutateur de volet d'objectif | ⑱ | Filetage pour trépied                                     |
| ⑧ | Fenêtre du viseur               | ⑲ | Bouton de réglage de plage de mise au point               |
| ⑨ | Fenêtre autofocus               | ⑳ | Retardateur   |
| ⑩ | Témoin rouge (fonctionnement)   | ㉑ | Fenêtre de contrôle de chargement du film                 |
| ⑪ | Flash                           | ㉒ | Verrou du dos   |

**Table of Contents**

<b>Handling Precautions</b> .....	13
<b>A. Shooting Preparations</b> .....	17
1. Loading the Battery .....	17
Checking the Battery .....	19
2. Camera Handling .....	23
3. Loading the Film .....	27
<b>B. Basic Picture Taking Operation</b> .....	33
1. Selecting the Lens .....	35
2. Taking a Picture .....	39
Focus Lock .....	45
3. Fixed Distance Button .....	49
4. Self-timer Function .....	57
<b>Neckstrap</b> .....	61
<b>Specifications</b> .....	62

## ! Handling Precautions

- 1) This camera is not resistant to water, and should not be used outdoors if snowing. If accidentally dropped in water, contact an authorized Canon service facility. Keep the camera out of salt spray and excessive humidity. If used at the beach, clean it thoroughly afterward with a dry cloth.
- 2) Store the camera in a cool, dry, dust-free place. Be sure to keep the camera out of direct sunlight, and away from "hot spots" such as the trunk or rear window shelf of a car. Avoid places where mothballs are used, and in excessive humidity, use a desiccant.
- 3) Do not attempt to disassemble the camera yourself, due to the high-voltage circuitry inside.
- 4) The battery may explode or cause burns if disassembled, recharged, shorted, exposed to high temperatures, or disposed of in fire.
- 5) Use a blower brush to remove dust and sand from the lens and inside the camera. Do not apply any fluids to the lens or body. Take it to a Canon service facility for more cleaning if necessary.
- 6) Film passing through X-ray examinations at airports may be exposed and ruined even when loaded in the camera. Request a hand-checked inspection to avoid damage.
- 7) Color reproduction may be adversely affected if film is left in the camera for a long time. Always develop exposed film promptly.
- 8) When the camera has not been used for a long time, or when planning a trip or other occasion for taking important pictures, verify that the camera is functioning properly by checking various operations or by having the camera checked at an authorized Canon service facility.

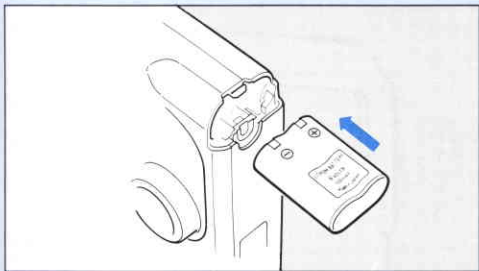
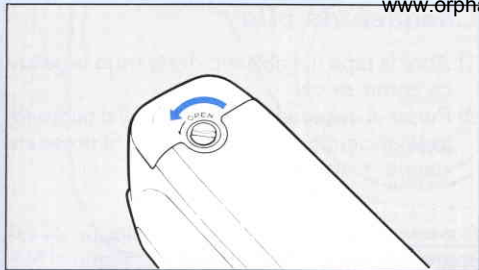
## A. Shooting Preparations

### 1. Loading the Battery

The camera operates on one, 2CR5 6V lithium battery.

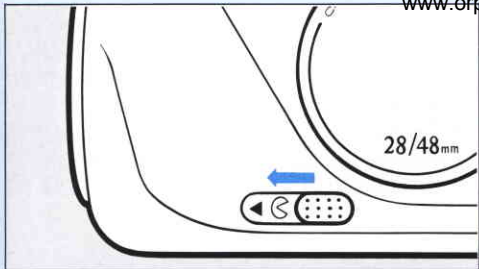
- 1) Loosen the battery cover screw with a coin. The screw cannot be removed from the cover.
- 2) Remove the battery cover screw and insert a new battery as shown with the curved side facing up.
- 3) Replace the cover securely and tighten the screw. The screw should be tightened only after the cover is properly in position.

Sure Shot Date model owners need to set the date after the battery has been loaded. Refer to the separate date function instruction sheet for setting information.



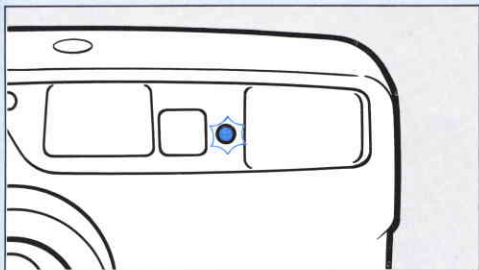


## Checking the Battery



- 1) Open the lens cover by sliding the switch as shown.
- 2) Press the shutter button halfway. If the red lamp lights up, the battery is okay. Replace the battery if the red lamp does not appear.

Shooting Capacity: approx. 35 rolls of 24-exp. film with the flash used 50% of the time according to Canon's Standard Test Method.



- When you intend to take a large number of pictures, such as during a trip, or when you will be taking many pictures using the flash, such as at a wedding, be sure to take along a spare battery.
- When the camera is not in use, be sure to close the lens cover to protect the lens from dust and to prevent pictures from being taken accidentally.

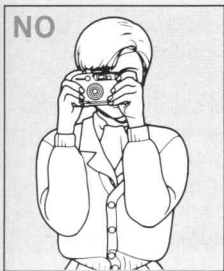
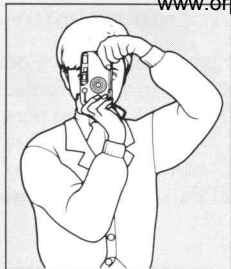
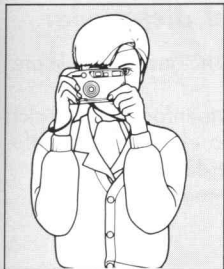
## 2. Camera Handling

The way in which you hold the camera and press the shutter button are important factors in taking sharp pictures. Try these tips for proper handling.

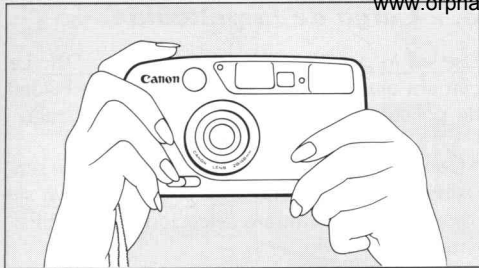
### *Holding the Camera*

- 1) Put the neckstrap around your neck and hold the camera firmly with both hands.
- 2) Keep your elbows pressed lightly against your body.
- 3) Look into the viewfinder while holding the camera lightly against your nose.
- 4) Spread your feet apart about shoulder width for a steady, natural stance.

• Be sure that your fingers or hair do not block the lens, autofocus windows, exposure metering windows, or flash.

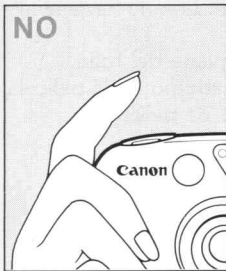


## Shutter Button Action



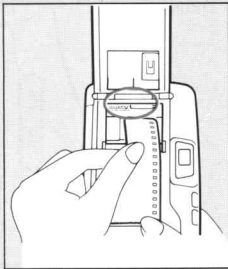
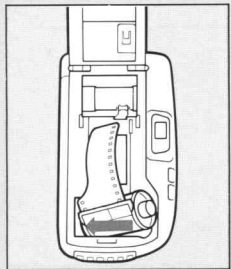
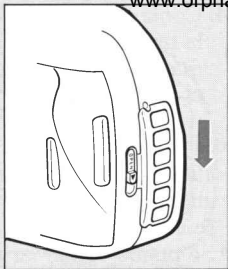
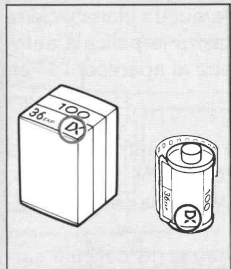
The shutter button activates two functions depending on the amount of pressure applied.

- 1) Press halfway for automatic focus and exposure metering. When the subject is in focus, the green lamp lights up.
- 2) Press completely to take the picture.



- The shutter button cannot be pressed completely if the subject is not in focus.
- Shutter button action plays an important part in taking sharp pictures. A quick stroke with the tip of your finger or fingernail may cause unnecessary camera movement called “camera shake”. Press the shutter button gently.

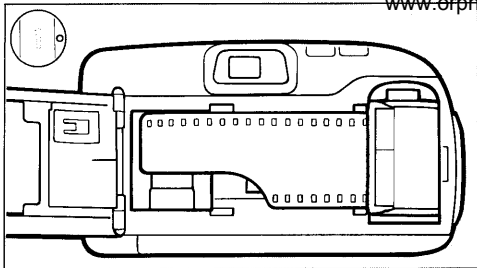
### 3. Loading the Film



Use only DX-coded film whenever possible.  
The camera automatically sets the film speed.  
Load the film out of direct sunlight.

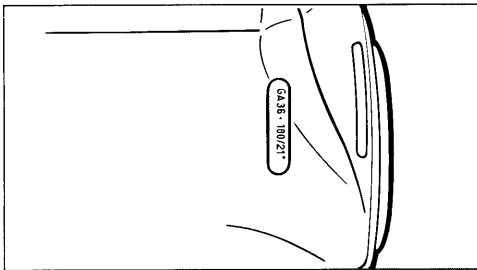
- Film with speeds of ISO 50-1600 can be used with this camera. If film without a DX code is used, the camera automatically sets the film speed to ISO 100.

- 1) Slide the back cover latch down to open the back cover.
- 2) Insert the flat end of the film cartridge in first.
- 3) Carefully pull the film tip across until it matches up with the film mark.

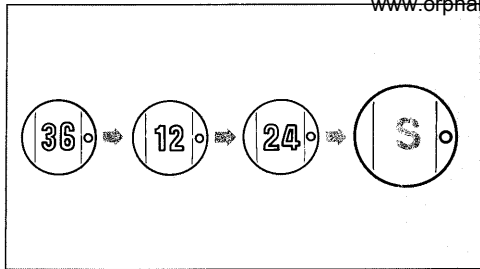


4) Make sure that the film lies flat and close the back cover. The camera advances the film automatically and stops when "1" appears in the frame counter.

- If the film does not advance correctly, "1" will not appear in the frame counter. If this occurs, open the back cover and reload the film.
- You can confirm whether or not film is loaded in the camera by looking through the film check window.



## Film Rewind



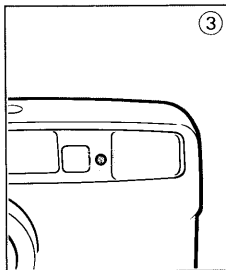
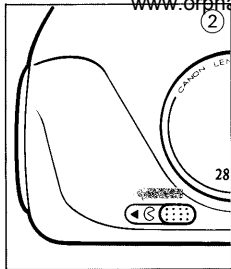
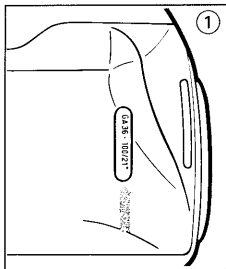
The camera rewinds the film automatically when the end of the film is reached. When the film is fully rewound, rewind stops and “S” appears in the frame counter. After making sure that “S” has appeared in the frame counter, open the back cover and remove the film.

- If more than the designated number of frames are taken on a roll of film, the very last frame may be cut off when the film is processed.

## B. Basic Picture Taking Operation

Check these three points before taking pictures.

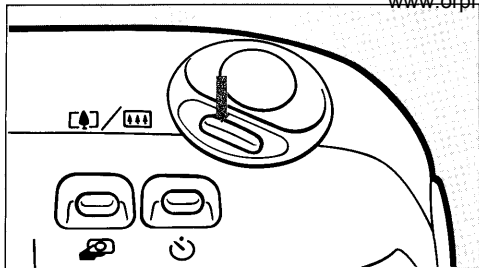
1. Is film properly loaded in the camera? (See page 27.)
2. Is the lens cover open? (See page 19.)
3. Is the battery OK? (See page 19.)





## 1. Selecting the Lens

The lens is automatically set to *the standard* (48 mm) position when the lens cover is opened. Switch the lens to *the wide-angle* (28 mm) position by pressing *the Wide-angle/Standard button*. To switch the lens back to the standard position, press *the Wide-angle/Standard button again*.





■ **Standard position 48 mm**

This position is suited for snapshots or candid shots of people.

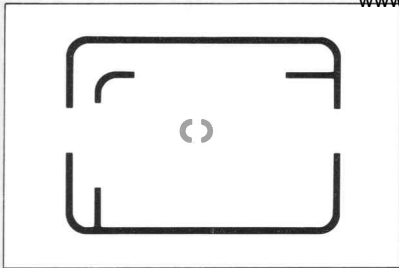


■ **Wide-angle position 28 mm**

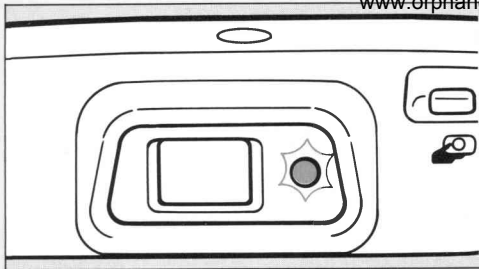
This position is suited for pictures of people in front of expansive landscapes or monuments. The wide-angle position is also handy for taking pictures of groups of people when indoors where space is limited.

## 2. *Taking a Picture*

When the shutter is pressed halfway, the camera focuses on the subject located in the center of the viewfinder.



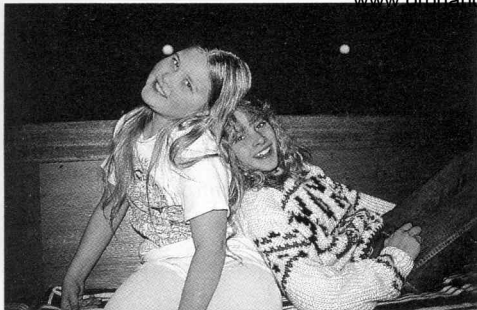
- 1) Look into the viewfinder and compose the picture so that the AF frame covers the subject.



2) Press the shutter button halfway to focus the subject. When the subject is in focus, the green lamp lights up. Without releasing the pressure on the shutter button, gently press the shutter button completely to take the picture. (The flash fires automatically in low-light situations.)



- The camera cannot focus on subjects which are closer than 2.3 ft/0.7 m (the green lamp blinks if the subject is too close). Keep at least 2.3 ft/0.7 m away from the subject for sharp focus.
- If the subject is 2.3 - 3.3 ft (0.7 - 1.0 m) away, recompose the picture using the special viewfinder marks as illustrated. This will ensure that the top of the picture will not be cut off when developed.



## Shooting Distance Range for Flash Photos

(Using color print film)

For proper flash coverage, be sure to stay within the range of the film in use.

Film	Wide-angle (28 mm)	Standard (48 mm)
ISO 100	2.3-12.5 ft/0.7-3.8 m	2.3- 7.5 ft/0.7-2.3 m
ISO 200	2.3-17.7 ft/0.7-5.4 m	2.3-10.8 ft/0.7-3.3 m
ISO 400	2.3-24.5 ft/0.7-7.6 m	2.3-15.4 ft/0.7-4.7 m

### Red Eye

The subject's eyes may appear red in flash photos due to the light reflected from the retina. To minimize this, have the subject avoid looking directly at the camera. If indoors, turn on additional room lights.

## Focus Lock

When your subject is not in the center of the picture frame, use the focus lock function. Focus on the intended subject remains locked as long as the shutter button is held halfway. This function lets you vary composition by putting the subject off-center.

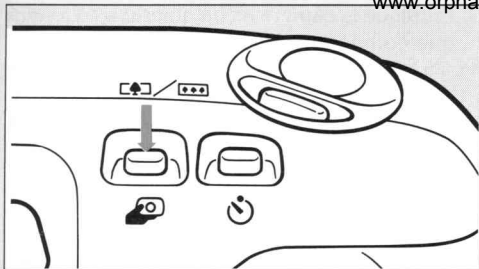


- 1) First, put the AF frame over the intended subject and press the shutter button halfway to lock focus. Make sure the green lamp lights up.



2) Reframe the picture as desired while pressing the shutter button halfway. Press the shutter button completely to take the picture.

- When using focus lock, be sure that the distance between you and the subject does not change.
- Focus lock clears when you remove your finger from the shutter button.

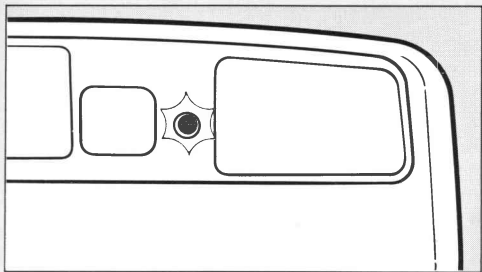


### 3. *Fixed Distance Button*

On a trip or other occasion when asking someone to take a picture for you, press the fixed distance button before handing the camera over. The picture will turn out sharp regardless of the composition.

- 1) Select the lens.
- 2) Press the fixed distance button.

- The red lamp blinks to indicate that the function has been set.







3) Hand the camera to someone. All this person has to do now is compose and press the shutter button.

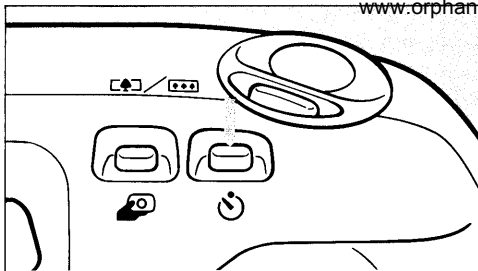
- This function automatically cancels after one picture is taken. It also cancels 30 seconds after the fixed distance button is pressed, or when pressed a second time.

There are some subjects which are occasionally difficult for the camera to accurately focus on. Below are a few examples of these hard-to-focus subjects and the methods you can use to ensure sharp pictures.

### **Examples:**

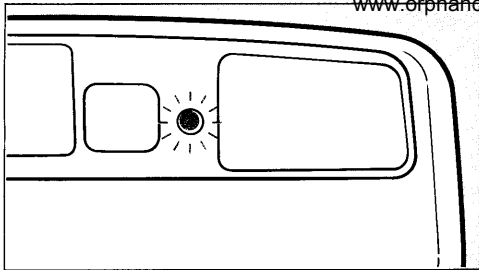
1. Highly reflective objects (surface of a shiny car)
2. Objects with low reflectance (black hair)
3. Objects which are smaller than the focus mark
4. Objects behind glass (pictures taken from a bus or airplane)

- For # 1 to 3, use focus lock to focus on another object which is located about the same distance away, and then recompose and take the picture.
- To take a picture of an object located behind glass, move in as close to the glass as possible.



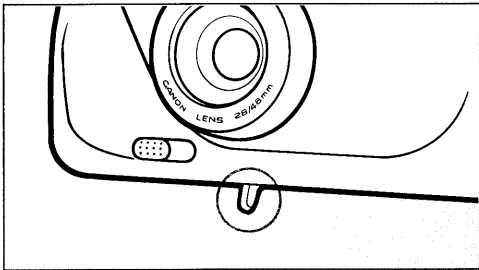
The self-timer function delays shutter release for 10 seconds to include yourself in the picture.

- 1) Compose the picture so that the AF frame is positioned on the subject, and then press the self-timer button. Confirm that the green lamp lights up.
- Focus is set when the self-timer button is pressed. Do not stand in front of the camera while pressing this button.



2) The red lamp (operation indicator lamp) blinks slowly for eight seconds and then blinks quickly for the final two seconds before the picture is taken.

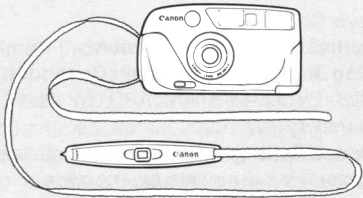
- To cancel the self-timer after it has started, press the self-timer button again or close the lens cover.



- When using the self-timer with the camera placed on a desk or table, use the tilt stand to provide a better camera position as shown in the illustration.

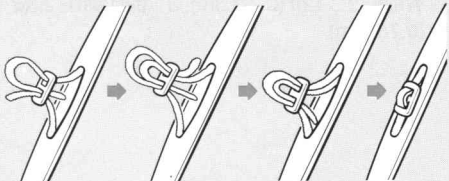
## Neckstrap

①



- 1) Pass the neckstrap through the fixtures as illustrated.
- 2) Insert the ends of the neckstrap into the shoulder pad.

②



## General

**Type:** 35mm AF lens-shutter camera with dual focal lens

**Format:** 24 × 36mm

**Lens:** Electric dual focal changeover

WIDE: 28mm f/4, 4 elements in 3 groups

STANDARD: 48mm f/6.5, 7 elements in 6 groups

**Viewfinder:** Reverse Galilean type

**Viewfinder Coverage:** 85% of actual picture area

**Viewfinder Magnification:** WIDE, 0.34 × ; STANDARD, 0.58 ×

**Shutter:** Programmed; also serves as aperture blades

## Autofocus

**AF Control:** Solid State Active Triangulation (SSAT) system using Position Sensing Device (PSD)

**Focusing Range:** 2.3ft (0.7m) to infinity

**Fixed Distance Button:** Sets maximum focus distance at 8.9ft/2.7m

## Exposure Control

**AE Control:** Programmed System

**Metering Range:** (at ISO 100)

WIDE: EV 9.5-17/STANDARD: EV 11-17

## Film Handling

**Film Speed Setting:** ISO 50-1600 automatically set in one-step increments by DX code

**Film Load/Wind/Rewind:** Automatic

## Flash

**Guide Number:** 29.5ft/9m at ISO 100

**Flash Distance Range (at ISO 100):**

WIDE: 2.3-12ft (0.7-3.8m); STANDARD: 2.3-7.5ft (0.7-2.3m)

*Other*

**Self-timer:** Provided with 10-sec. delay

**Date Imprint (Date Model Only):** Four formats available with automatic calendar and clock programmed up to 2022. World time clock shows date and time of 24 cities. Adjustable for summer time fluctuations. Alarm setting also available. Powered by camera battery.

*Power Source*

**Battery:** One 6V lithium battery (2CR5)

**Shooting Capacity:** 35 rolls of 24-exposure film with 50% flash use

*Dimensions*

**Size:** 5-9/16''(W) × 3-1/16''(H) × 2-1/4''(D) (141.9 × 77.4 × 57.5mm)

Date model: Depth increases 1/16'' (2mm)

**Weight:** 12.3oz (350g) with battery

Date model: Weight increases 0.4oz (10g)

All data are based on Canon's Standard Test Method.

Subject to change without notice.

This digital apparatus does not exceed the Class B limits for radio noise emissions from digital apparatus set out in the Radio interference Regulations of the Canadian Department of Communications.